

# SPACE SHUTTLE (UNFINISHED)

Cartridge Instructions

## For One or Two Players

You start at the launch pad and the count down is running. You are on your way to space! Watch as the shuttle ascends and the rocket boosters are jettisoned. Once you settle into orbit, it is time to do what you were sent to do. The computer will assist you in the order of sequences you must perform your task. Listen careful, maneuver the ship properly and you will be home in time for dinner and more launches.



## OBJECT OF THE GAME

You are a commander of a Space Shuttle. It is your mission to launch your payload, recover a distressed satellite and return safely to launch point.

## CONTROLS

Keypad

- [1] - Shows cockpit view.
- [2] - Shows the map and shuttle trajectory.
- [3] - Deploys satellite. It will switch screens to show you the launch.
- [4] - Speeds up movement of the shuttle.
- [5] - speeds up movement on the map view.
- [0] - Activates/deactivates the control arm.
- [ENTER] - Capture the satellite

Side Keys -- When in map view, the upper and lower buttons control the trajectory.

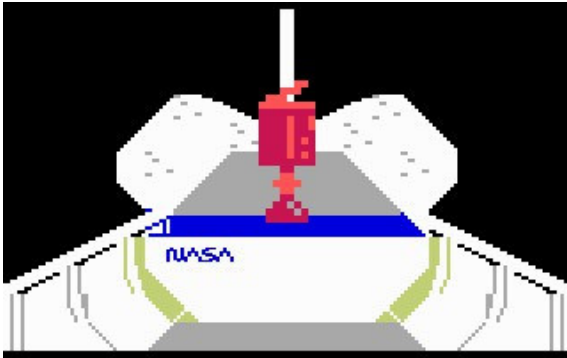
Side Keys -- When in cockpit view, the upper and lower buttons control speed of shuttle.

Direction Disc -- Maneuvers the shuttle/satellite and controls robot arm.

## GAME PLAY

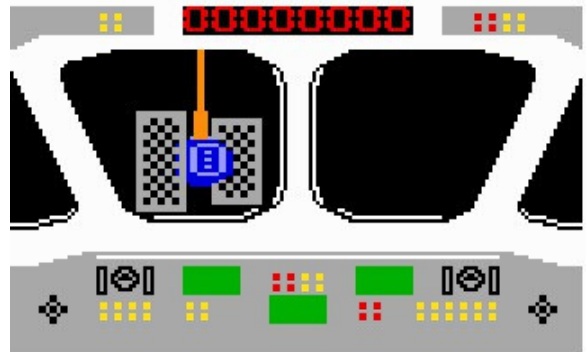
After launch, you are switched to the map view. Here you will see the trajectory of the shuttle orbiting earth. Your first mission is to launch the satellite in the payload. The time that has elapsed during the mission is shown at the top.





Press [3] on the keypad and you are switched to the payload view. The satellite will launch automatically.

Your next mission is to capture the distressed satellite. Press [1] and you are switched to the cockpit view. Use the side buttons to bring the satellite closer. Control the pitch of the satellite by using the disc. When the satellite is close to the shuttle, press the [0] and the robot arm comes out. Use the disc to control the robot arm locating it above the satellite. It should overlap the mark on the top of the center of the satellite. Once located properly, press the [ENTER] key to capture the satellite. You will hear the computer mention "Mission Complete. Good job, bring it home." If you need to switch back to control the location of the satellite, press the [0] again and again to switch to controlling the robot arm.



When the mission is complete, it is time to return home. The only way to do this is run out of fuel. Press [5] to speed up the shuttle and/or press the side buttons to consume fuel. Once the fuel is consumed, the shuttle will return to earth safely and you will be setup for the next launch. Do not forget dinner before the second launch.

### **SCORING**

You will only receive 1000 points when the mission is complete. It will be displayed once you launch and recover the satellites.

### **END OF GAME**

The game will end after the second mission is completed; abruptly if I may add.