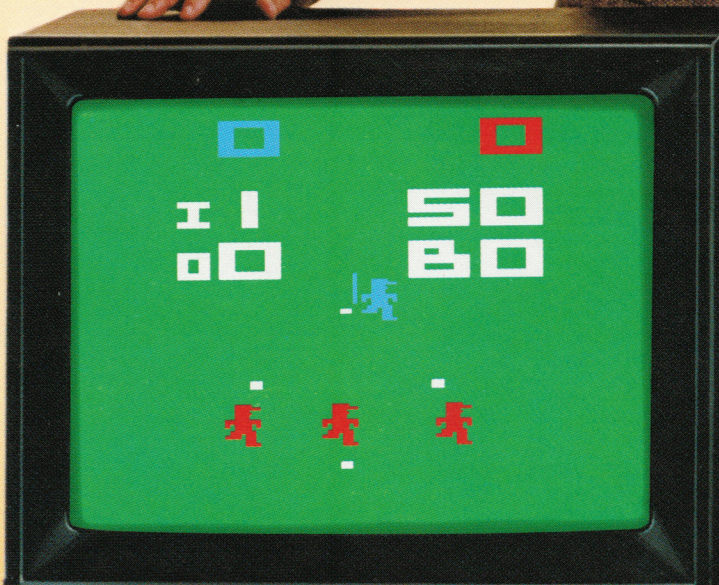
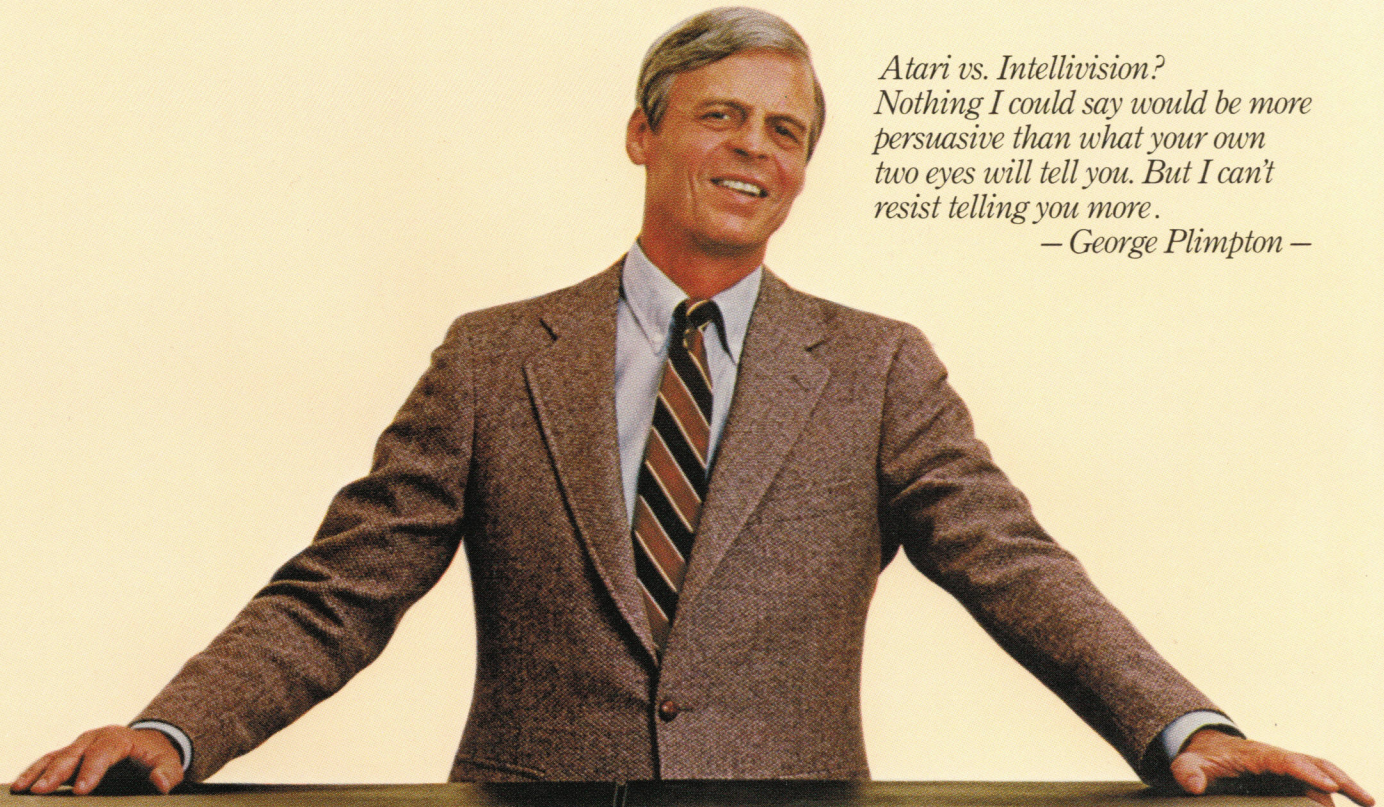


Two pictures are worth

*Atari vs. Intellivision?
Nothing I could say would be more
persuasive than what your own
two eyes will tell you. But I can't
resist telling you more.*

— George Plimpton —



ATARI
HOME RUN™ BASEBALL



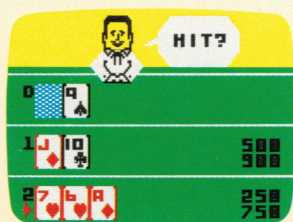
INTELLIVISION
MAJOR LEAGUE BASEBALL™

a thousand words.

It's obvious how much more realistic Intellivision graphics are. But take a closer look. Notice the Intellivision players. They've got arms and legs like real players do. Look at the field. It actually looks more like a real baseball field. If you compare the two games, I think you'll find that Intellivision looks a lot more like the real thing.



Atari *Casino*™ No dealer.



Intellivision *Las Vegas Poker & Blackjack*. You play cards with a shifty-eyed dealer.

More about action

You can see how much more realistic Intellivision looks. What we can't show you here is how much more realistically it moves. If you could compare the two, I think you'd see that Intellivision has smoother and more life-like movement than Atari.



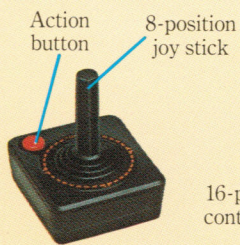
Atari *Pele's Championship Soccer*™ players



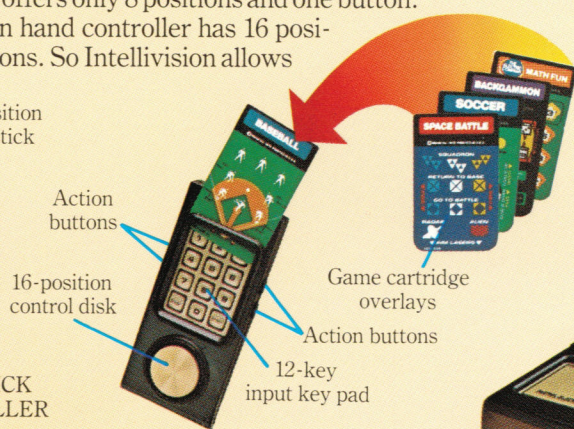
Intellivision *NASL Soccer*™* players

More about control

If you've ever played a video game, you know how important control is. And if you held these two control units in your hand, you'd know Intellivision gives you more. The Atari hand controller offers only 8 positions and one button. The Intellivision hand controller has 16 positions and 4 buttons. So Intellivision allows



ATARI JOY STICK HAND CONTROLLER



INTELLIVISION HAND CONTROLLER

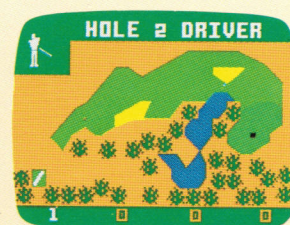
you to maneuver players and objects in more directions with greater precision and accuracy. And the Intellivision controller is compatible with the entire library. With Atari, some games require the purchase of additional control units.

More about challenge

You can't see it here, but I have found that in many of the Atari programs, the game play is rather simplistic. With Intellivision, the game play is more sophisticated. And that makes Intellivision more challenging. With Intellivision PGA Golf for instance, you get nine different clubs to choose from. With Atari Golf, you have to make do with just one club. Greater attention to detail is a quality I have found in all of the Intellivision games. Making them more realistic. And more challenging.



Atari *Golf*



Intellivision *PGA Golf*™*

More about libraries

Both Intellivision and Atari have large libraries. But there really isn't any way you can tell which library is better, until you play with both. Once you compare the two systems for challenge, sophistication and continued interest, I'm confident you'll choose Intellivision. But don't just take my word for it. Visit your local dealer and decide for yourself.



MATTEL ELECTRONICS®
Intellivision™
 Intelligent Television

For your nearest dealer call 1 (800) 323-1715
 In Illinois 1 (800) 942-8881

*Trademarks used under license from designated owners.
 © Mattel, Inc. 1981. All Rights Reserved.